

MAX

P O W E R

CONTROL TO THE MAX

NEW SERIES



ECO

PROPORTIONAL

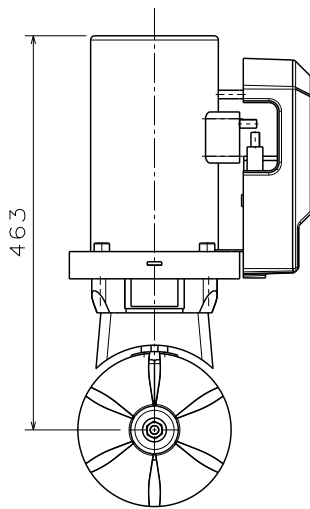
www.max-power.com

NEW SERIES

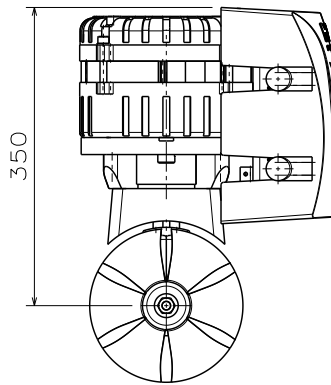
PROPORTIONAL

- ECO FRIENDLY
- FULLY PROPORTIONAL CONTROL
- UNLIMITED RUNTIME*
- COMPACT AND LIGHTWEIGHT

Conventional Thrusters

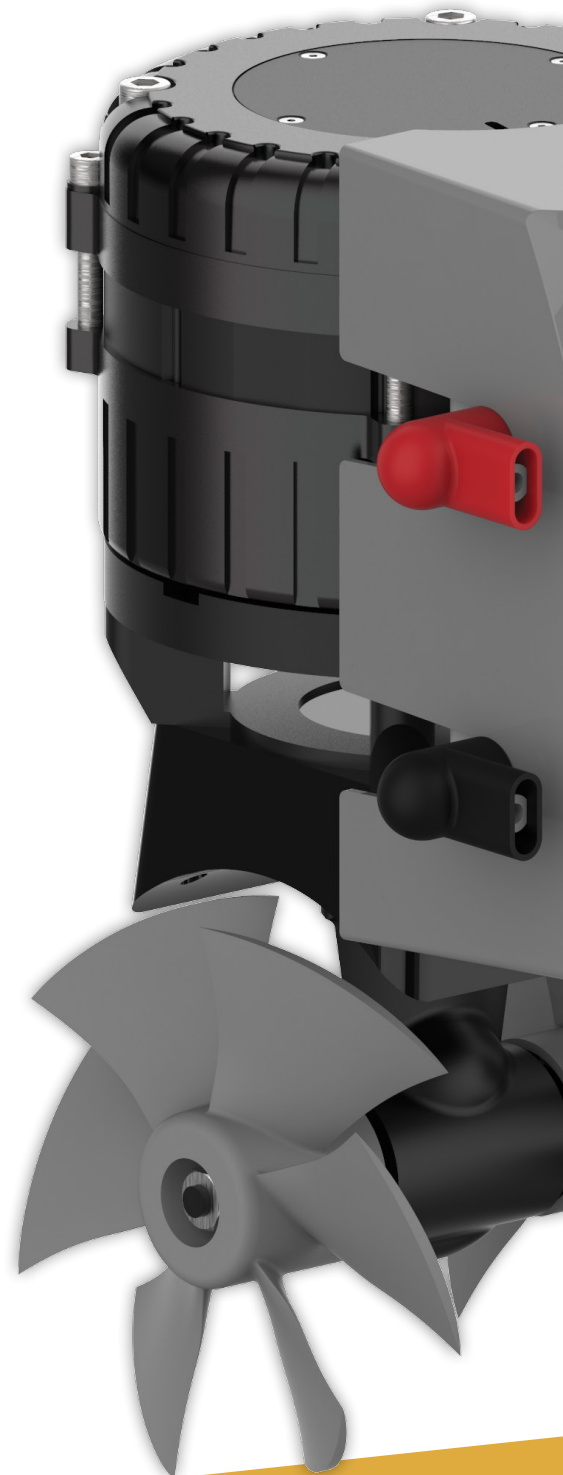


ECO PRO



*Until the battery runs out

Made in EU





- Improved performance and efficiency
- Longer lifespan and minimised maintenance
- Smoother and quieter operation, enhancing safety and comfort of crew and passengers
- Eco-friendliness resulting from reduced power consumption
- Compatibility and easy integration into existing thrusters
- Remote troubleshooting

BACKED BY OUR TEAM OF EXPERTS
for installation, maintenance, and repair services

Included

Proportional Joystick

Precise accuracy
with new joystick



Application

Modern mobile
application for
monitoring

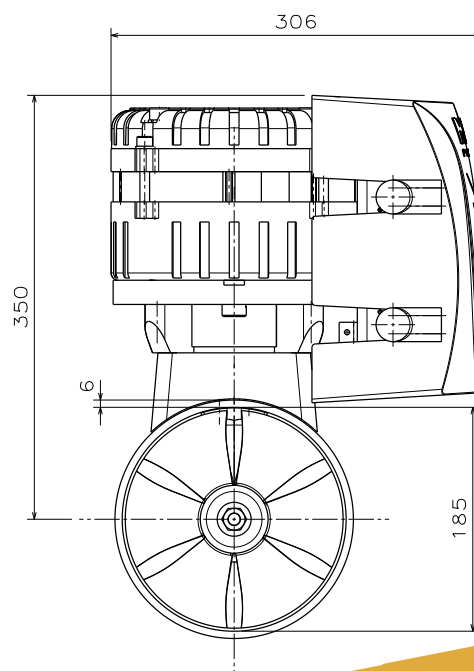


ECO PROPORTIONAL



MAX
 POWER
 CONTROL TO THE MAX

Dimensions (mm)



Model	ECO-PRO 90	ECO-PRO 110	ECO-PRO 130
Code	636674	636675	636676
Voltage (V)	24	24	48
Thrust (Kg)	90	110	130
Propellers	Duo	Duo	Duo
Power (KW/hp)	5,3/7,1	6/8	8/10,7
Drive Leg (material)	Composite	Composite	Composite
Tunnel Ø (mm)	185	185	185
Boat type	Boat Length (Feet/Metres)		
Heavy Displacement High Windage & Cruising	28'-35' / 6-10,6m	32'-40' / 9,7-12m	35'-46' / 10,6-14m
Medium Displacement Medium Windage & Fast Cruising	30'-40' / 9-12m	36'-48' / 11-14,6m	42'-55,5' / 12,8-17m
Light Displacement Light Windage & Super Fast Cruising	33'-46' / 10-14m	39'-51' / 11,8-15,5m	46'-60' / 14-18m