

## Stern Pod range

### Product data sheet - Pod 60



Details:	12V	24V
Product ref.:	MPSPC412 / POD	MPSPC424 / POD
Typical boat size:	25 - 39'	25 - 39'
Tunnel diameter (inside):	185mm	185mm
Tunnel thickness:	6 - 7mm	6 - 7mm
Nominal power voltage:	12V	24V
Control system voltage:	12V	24V
Weight:	31kg	31kg

#### Performance data:

Test power voltage:	10.75V	22V
Amperage:	405 Amps	200 Amps
kW	4.35	4.4
Hp:	5.8	5.9
Thrust kg / lbs:	58 / 128	63 / 139
Duty Cycle (S2):	3.5min	4.5min

The POD 60 is part of Max Power's new Stern Pod range designed to simplify the traditionally problematic installation of stern thrusters in motor boats.

This single pre-assembled unit reduces potential installation errors, has a single propeller, a 185mm diameter stern tunnel complete with deflectors and is available in 12 and 24V.

#### Unique Features:



Ignition Protected  
& Water Resistant



Composite  
drive legs  
Zero  
maintenance



Line  
shields



High spec.  
DC contactors



High power  
connections



Purpose built  
DC motors



Unrivalled  
safety  
features



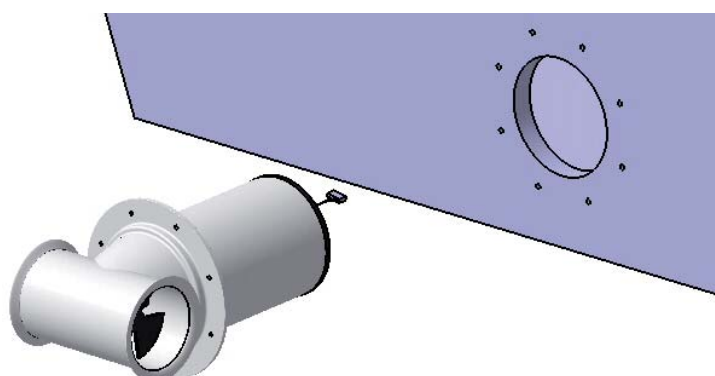
Case hardened  
spiro-conical gears

#### Stern Pod Installation:

Easy to install and requiring nothing other than simple electrical connections, the Stern Pod greatly reduces installation time.

The Stern Pod can be directly fitted from the outside of the boat thus requiring little or no work in the often inaccessible and cramped transom area.

Ignition protected and water resistant, the thruster's motor is protected from water and the corrosive atmosphere in the bilge.



NB. Performance data is given for a thruster installed at one tunnel diameter immersion depth, in a tunnel no longer than twice the tunnel's diameter and this within a variation of + / - 6%. Higher voltages will result in higher thrust ratings, higher power consumption and a reduced duty cycle. Longer tunnels will result in lower thrust ratings and higher power consumption.