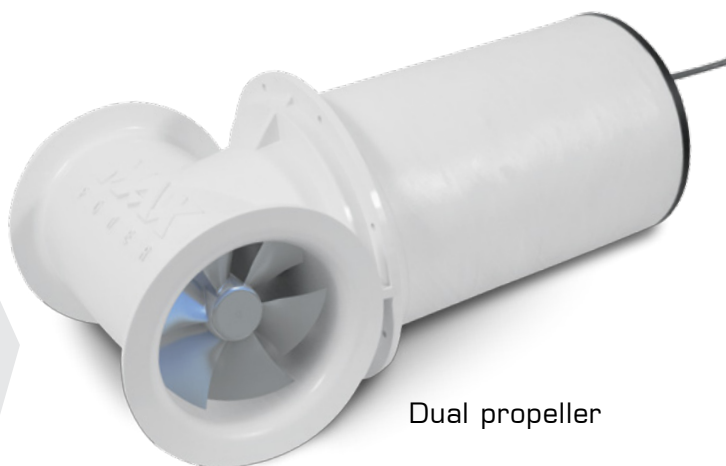


CT165

The CT 165 is part of MAX POWER's Stern Pod range designed to simplify the traditionally problematic installation of stern thrusters in motor boats. This single pre-assembled unit reduces potential installation errors, has twin propellers, a 250mm diameter stern tunnel complete with deflectors and a thrust rating of 160/352 (kg/lbs).

Specifications

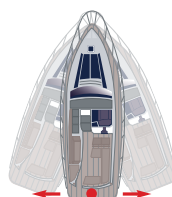
Code	317632
Model	CT 165
Boat size	12m - 20m 40 - 66'
Voltage	24 V
Thrust up to	160 kg / 352 lbs
Power	11.9 kW / 15.9 hp
Weight	61 kg
Tunnel Ø	250mm



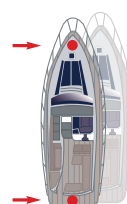
Dual propeller



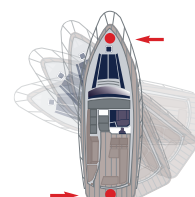
Bow thruster alone



Stern thruster alone



Bow & Stern thrusters



Bow & Stern thrusters

Unique Features:



Ignition Protected & Water Resistant



Composite drive legs
Zero maintenance



Line shields



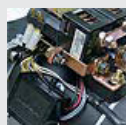
High spec.
DC contactors



High power connections



Purpose built
DC motors



Unrivalled safety
features



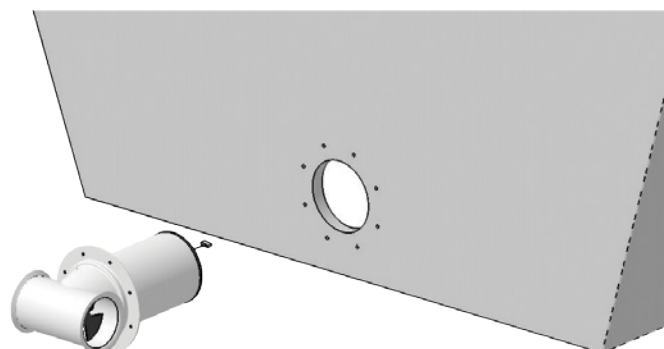
Case hardened
spiro-conical gears

Stern Pod Installation:

Easy to install and requiring nothing other than simple electrical connections, the Stern Pod greatly reduces installation time.

The Stern Pod can be directly fitted from the outside of the boat thus requiring little or no work in the often inaccessible and cramped transom area.

Ignition protected and water resistant, the thruster's motor is protected from water and the corrosive atmosphere in the bilge.



NB. Performance data is given for a thruster installed at one tunnel diameter immersion depth, in a tunnel no longer than twice the tunnel's diameter and this within a variation of + / - 6%. Higher voltages will result in higher thrust ratings, higher power consumption and a reduced duty cycle. Longer tunnels will result in lower thrust ratings and higher power consumption.