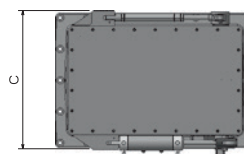
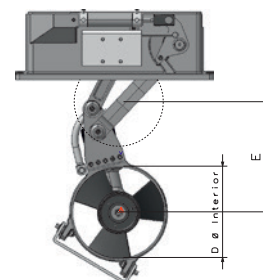
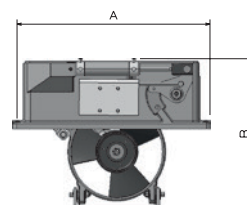
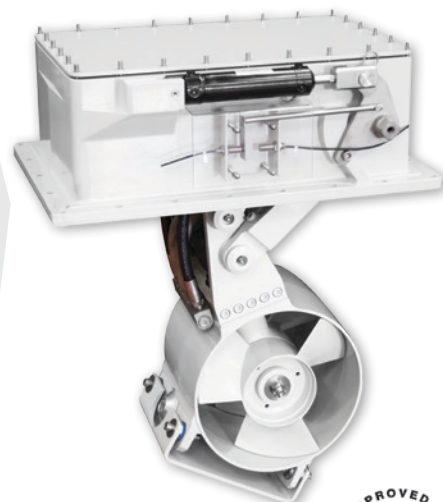


R 300

Specifications

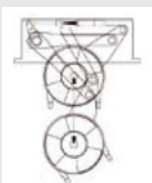
Code	317810	317811
Model	R 300/ 15	R 300/21
Power ratings (hp)	10 / 17	
Thrust	11 kgf per kw	
Max. Hydraulic power (kw)	25	
Hydraulic power	28-35 lpm / 220-260 bar	45-55 lpm / 230-270 bar
Power pack options	PTO & 24V	
Hydraulic motor	Piston	
Opening/closing mechanism	Hydraulic & Gas Spring	
Propellers	Duo, 3 blades	
Weight (kg)	73	
A (mm)	665	
B (mm)	500	
C (mm)	450	
D (mm)	300	
E (mm)	360	

Boat Type	Boat Length (feet/meter)
Heavy Displacement High Windage & Cruising	60' - 85' / 18 - 26 m
Medium Displacement Medium Windage & Fast Cruising	77' - 95' / 23,5 - 29 m
Light Displacement Light Windage & Super Fast Cruising	75' - 104' / 23 - 32 m



Newly redesigned, the R300 now benefits from evolutions already pioneered on the R450. Both light & powerful this unit has been consistently specified by designers around the world for many years and is ideal for yachts from 60- 104'.

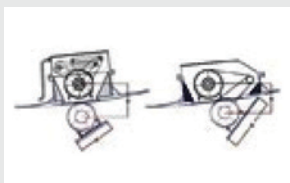
Unique Features:



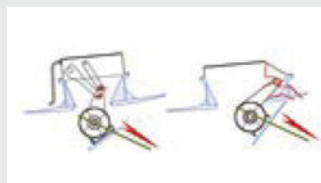
Patented movement



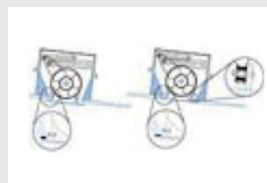
Space saving



Unique Design



Safety features



Durability